

# Four Cutter: SDS-Max

## Head Geometry



Pilot drill with three cutting edges for safe and accurate spot drilling.

Diameter arrangement optimised and featuring a combination of chisel shaped cutting teeth and pointed breaker teeth made of carbide metal for quick perforation of the core diameter and fast removal of large debris volumes.



## Flute Geometry

Large volume 3 spiral conveyor flute (U-shape) for low vibration and excellent dust removal.

The one piece Vires core cutter was developed for heavy duty applications in concrete, masonry and stone. It excels by high performance and robustness in continuous operation by professional users.

The one-piece long shank ensures optimum transfer of the impact energy at a relatively low weight.

The special contour of the flute reduces material fatigue caused by high temperatures.

Suitable for perforations of  $\varnothing$  45-80mm in concrete, masonry, lime sandstone, eg for outside connections of cables or pipes.

# Four Cutter: SDS-Max



## Head Geometry

The body consists of high-grade heat-treated steel and is particularly suitable for the toughest applications.

Ultra fine grain carbide ensures high strength for a long service life.

**Can also be used with our Vires 740mm SDS Max Extension.**

Part Number	mm	mm
VRSDSMCC45310	SDS Max Concrete Core Cutter	45 x 310
VRSDSMCC55310	SDS Max Concrete Core Cutter	55 x 310
VRSDSMCC65310	SDS Max Concrete Core Cutter	65 x 310
VRSDSMCC80310	SDS Max Concrete Core Cutter	80 x 310

# Four Cutter: SDS-Plus



## Head Geometry

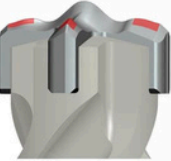
### Carbide tip:

Robust one-piece carbide tip (up to  $\varnothing 28\text{mm}$ , 3-piece from  $\varnothing 30\text{mm}$ )  
Perforates rebar with durable strength and constant precision.

### 4 x 90° geometry:

Specifically engineered cutting edges of equal height and with strong shoulders.

Ensures dimensionally accurate holes for professional anchoring and reliable plug fixing.



### Short spiral flute entrances:

Ensure fast removal of debris



### Radial rebar protection:

Prevents jamming and increases the service life.

### Wear markers:

Indicate reliably if still suitable for drilling plug holes.



## Flute design

### 4-spiral geometry:

For comfortable smooth drilling with low vibration.  
Optimum guidance in the drill hole.

### 4x4 design:

Supports precise concentricity, minimises wear and friction losses.  
High and consistent drilling performance for the full service life.  
maximum economic efficiency.



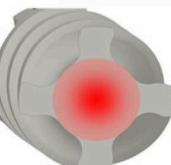
## Material

The body consists of high-grade heat-treated steel and is particularly suitable for the toughest applications.

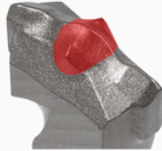
## Product range

SDS-plus:  $\varnothing 5\text{-}26\text{mm}$

SDS-MAX:  $\varnothing 12\text{-}52\text{mm}$



# Two Cutter: All Rounder



## Head Geometry

### Pilot Drill:

Superior stability when hitting rebar and in hard materials, comparable to a multi-cutter.

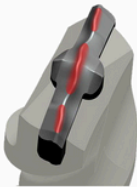


### Centering tip:

Distinct, active centering, optimum guidance from spotting.

### Short straight flute entrances:

Innovative head design ensures significantly higher speed and stability even in reinforced concrete.

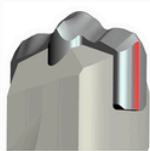


### Additional specially shaped core cutters:

Disintegrate concrete efficiently.

### Shovel effect:

Concave cutting faces ensure fast removal of drilling dust.



### Wear markers:

Indicate if EVO 2/MAX 2 are still suitable for drilling plug holes.

## Flute design



### Optimised vibration characteristics plus a reinforced core:

The pitch of the flute is precisely matched with the core diameter for an efficient transfer of power and convenient working.

### Large volume and robust flute:

Quick removal of debris supports rapid drilling progress.

## Material

The body consists of high-grade heat-treated steel and is particularly suitable for the toughest applications.



## Product range

SDS-plus:  $\varnothing$  3-26mm